

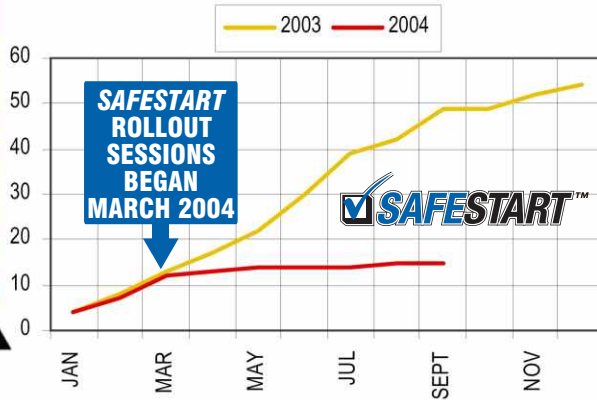
Safety in Numbers

CORPORATE SAFETY

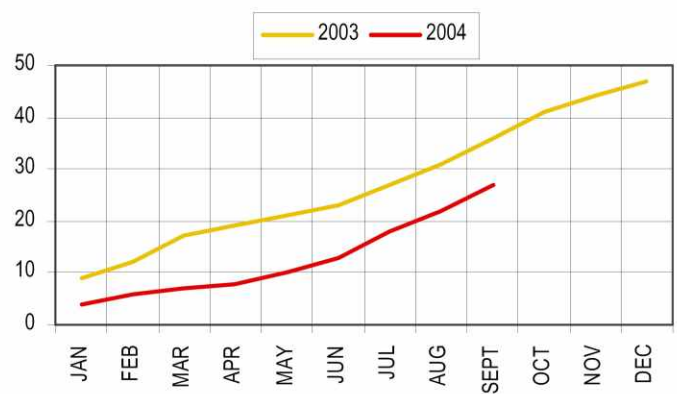
Number of Injuries – GVRD

September 2004

Requiring Medical Aid Excluding First Aid

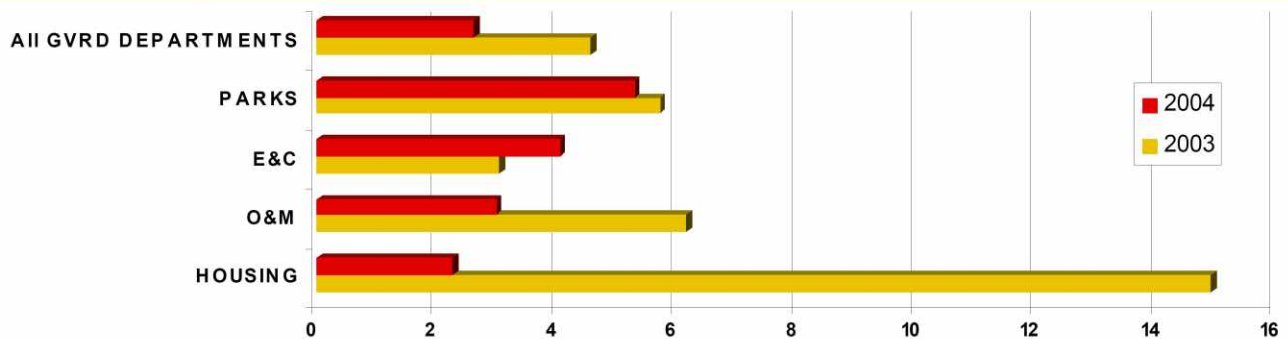


Resulting in Lost Time

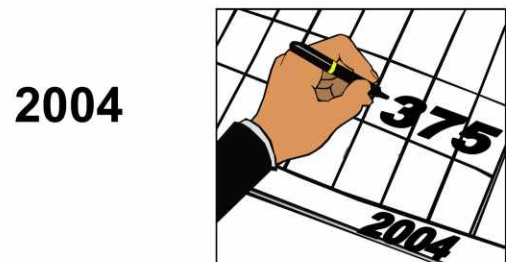
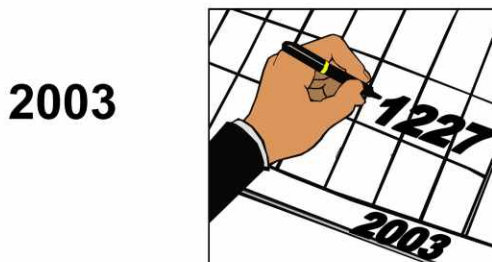


Frequency and Severity Rates compare the safety performance of the organization and of different departments. Data is normalized to reflect the size of the group relative to the number of injuries or days lost associated with accidents. This criterion is a recognized WCB and industry reporting standard.

Frequency Rate – # of lost-time injuries x 200,000 divided by # of hours worked



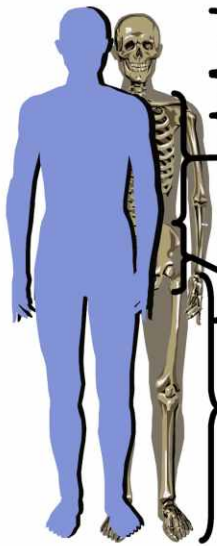
Days Lost - GVRD



Severity Rate – # of days lost X 200,000 divided by # of hours worked

	GVRD	PARKS	E&C	O&M	HOUSING
2003	165.1	82.8	95.0	219.9	628.2
2004	49.4	14.9	48.7	78.75	2.28

Injury by Body Part - GVRD



Head & Face
 Neck & Shoulders
 Trunk
 Upper Extremities
 Back
 Pelvic Region
 Lower Extremities
 Body Systems
 Other

	2004	2003
Head & Face	26	28
Neck & Shoulders	9	13
Trunk	5	5
Upper Extremities	70	74
Back	18	23
Pelvic Region	9	0
Lower Extremities	22	30
Body Systems	9	9
Other	3	1

WCB Quick Facts

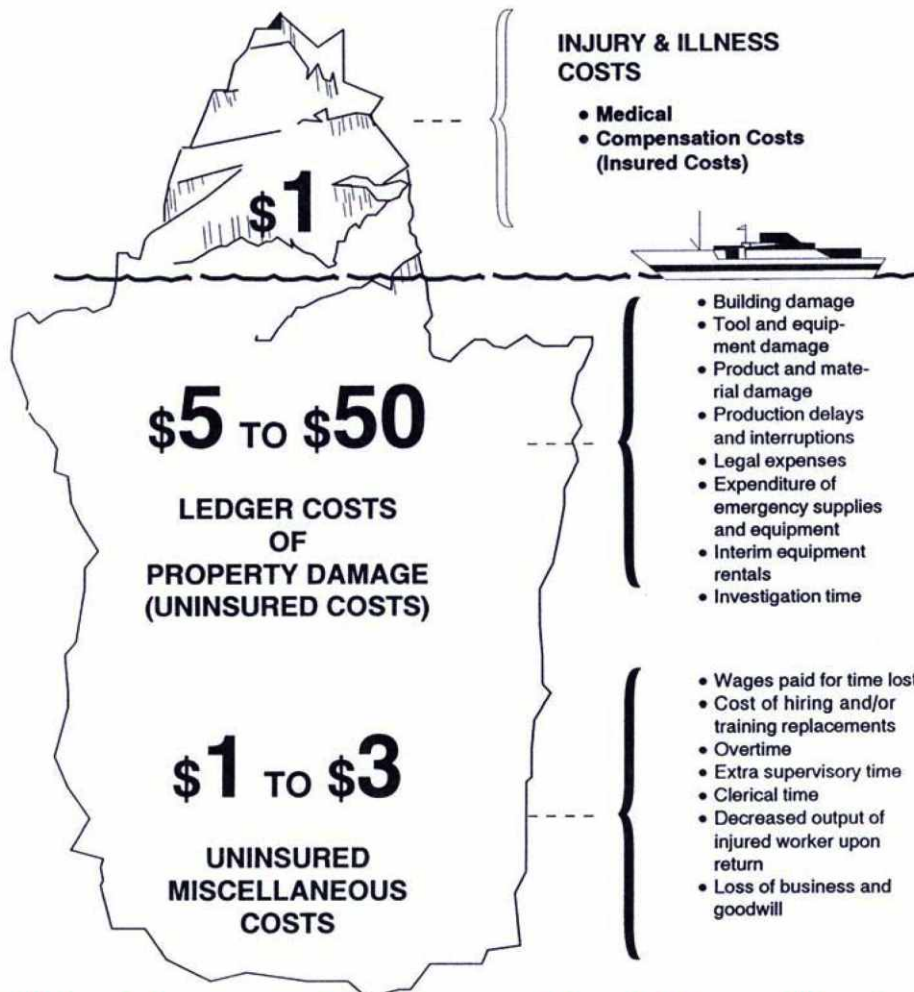
120,470 claims were paid for the first time in 2003

Approx. 2.8 million short-term disability days were paid in 2003

83% of all claims are started and finished within 90 days

46.5 days of wage-loss benefits are paid over the course of an average claim

ACCIDENT COST ICEBERG



WE WILL achieve a work environment in which we all lead productive injury-free lives.